



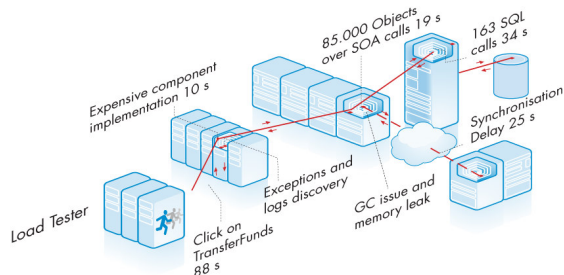
Test More Java/.NET Apps in Less Time with More Coverage. Rapidly Diagnose Performance Issues.

dynaTrace Test Center Edition

dynaTrace Test Center Edition is an enterprise-class Java/.NET diagnostics and performance management solution for performance test teams that integrates with major commercial and open source load testing solutions, such as LoadRunner, SilkPerformer and Visual Studio Team System, to automate and accelerate the process of documenting, isolating, analyzing and resolving performance issues in complex applications occurring under load. Using its patent-pending PurePath transaction tracing technology, dynaTrace provides in-depth visibility into the code-level performance of each individual transaction of virtual users in large load tests of highly distributed applications. dynaTrace is easy to configure allowing even non-Java/.NET experts to detect performance regressions inside applications invisible to testing tools, and to precisely isolate complex performance issues. It accelerates the entire problem resolution cycle by more than 90% and significantly reduces the number of required test cycles, allowing more time to be spent on strategic development and test activities.

PurePath Technology: Diagnose root-cause in minutes

The core of dynaTrace is its award winning, patent-pending PurePath Technology. It integrates and extends load testing solutions such as LoadRunner, SilkPerformer, or Visual Studio Team System to trace requests end-to-end at code-level from Virtual Users into backend application transactions. PurePath makes transparent the inner workings of applications under load, automating issue documentation and isolation, as well as reducing problem diagnostics and resolution times to minutes. It provides a common dataset that can be shared across testers, performance analysts and developers.



dynaTrace PurePath Technology

Tracing individual transactions

dynaTrace goes well beyond just recording data on aggregated transactions. Instead, it records the precise execution of Java/.NET transactions, uncovering all outliers. No extraneous information is included - only factors influencing the performance of a specific transaction are presented.

Real-time visibility down to code-level

dynaTrace provides real-time visibility into transaction performance from the end-user down to code-level simplifying data interpretation. Besides pure performance metrics (response times, CPU usage), dynaTrace also captures contextual data (e.g., method arguments, memory allocations, SQL-binds, sync events, exceptions/logs) to exactly identify the code segment causing the bottleneck.

End-to-end across distributed and heterogeneous tiers

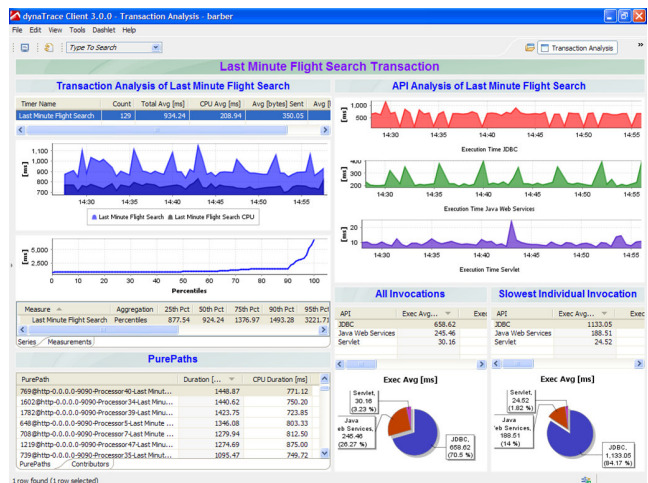
Trace transactions end-to-end, even across globally distributed servers/tiers including rich clients, whether Java or .NET.

Low overhead, small footprint on target servers

dynaTrace only instruments those methods that contribute to application performance and offloads data processing completely to the dynaTrace Collectors and Server. This not only enables a flexible deployment, but also reduces sustained overhead at 3-5%, while gathering PurePaths for all virtual user requests in large load tests of highly distributed applications.

Shareable – provide interactive reports to engineers

Provide interactive code-level reports of problematic transactions to development without having to be a Java/.NET expert. Developers can analyze only the relevant data using a familiar format offline **without having to reproduce the issue**, whether they are working in-house, or at a remote location using the included dynaTrace Client or free Viewer.



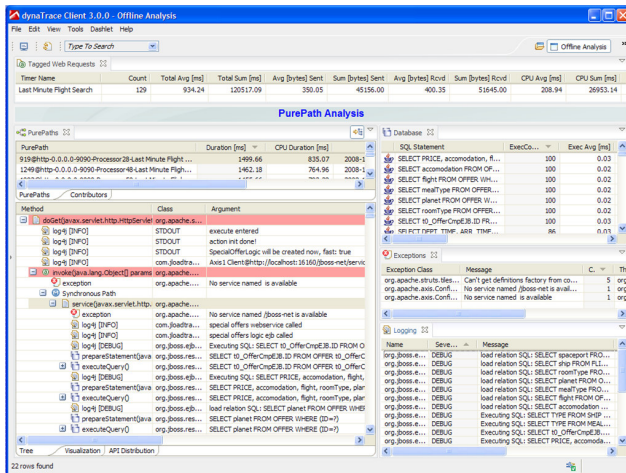
Automatically isolate performance problems



Automatically document and isolate problems

Testers automatically capture PurePath transaction data during load tests, making manual documentation of performance problems obsolete. As PurePath includes all the data required to diagnose the problem it also eliminates the need to rerun tests with additional log-options.

Performance analysts use the purpose-fit dashboards to significantly accelerate problem isolation in real-time or offline, eliminating finger pointing by quickly identifying those responsible to repair the issue – whether a developer responsible for a component, or a system architect responsible for application server configuration.



Precisely pinpoint a problem in a single transaction

Rapidly Diagnose and Resolve Problems

Developers and **software architects** can now easily diagnose application failures and performance problems in real-time or offline **down to the offending line of code** without having to reproduce problem scenarios on their local workstations. This frees up key development resources for building new features. A tight integration with IDEs, such as Eclipse and Microsoft Visual Studio, accelerates applying the necessary code changes to eliminate the issues. **Dev Managers** can ensure that more issues are caught and resolved early in test, keeping them from arising later, in production, where they are much more costly to diagnose and resolve.

Supported Test and Application Environments

Operating Systems

- Windows, Linux, Solaris, HP-UX, AIX
- z/Linux, z/OS

Application Servers & Portals

- IBM WebSphere, Oracle WebLogic, Sun Java AS, SAP NetWeaver, JBoss, Tomcat, ATG Dynamo, Borland Enterprise/Application Server, IONA Application Server, CoreMedia, Adobe JRun & ColdFusion, etc.
- MS IIS/ASP.NET, SharePoint, MS COM+ Services
- Proprietary Java/.NET Servers & Clients

Frameworks

- Hibernate, Struts, Applets, AWT/Swing/RCP, Spring, AOP, Oracle Toplink & Coherence, etc.

Java/.NET Runtimes

- Sun JVM, IBM JVM, Oracle JRockit & RT, HP JVM
- MS .NET CLR

DBs

- IBM DB2, Oracle DB, MS SQL Server
- Generic JDBC and ADO.NET databases

Remoting

- RMI/JRMP, RMI/IOP, RMI/T3, RMI/HTTP(s), ORMI, IIOp/ORBs, JBoss Remoting

- .NET Remoting, WCF

System & Application Server Monitoring

- JVM/CLR Agent: JMX, PMI, Perfmon
- Open Source Plugins: System data (OS, DBs), SNMP

Web service stacks

- IBM WebSphere, Oracle WebLogic & WS, Apache AXIS & HTTP Client, WebMethods Glue, SAP NetWeaver, JAX WS, Codehaus XFire, Hessian
- .NET Web Services

Messaging & Connectors

- JMS, IBM WebSphere MQ, Apache Active MQ, Tibco Rendezvous, CICS, MSMQ, etc.

Load Testing Products

- HP LoadRunner, Borland SilkPerformer, Microsoft Visual Studio Team System, IBM Rational Performance Tester, Compuware QA Load, etc.

Easy to apply to many different applications

dynaTrace lets you easily create custom sensors tailored for every application you need to test without requiring access to source code or a deep understanding of the application's architecture. Simply use the point and click auto-sensor assistant and the visual class browser to maximize visibility with minimum instrumentation and overhead. Simply manage all dynaTrace agents and plugins from the central server, using them just as needed— perfect for the needs of your test team.

DIAGNOSE ROOT CAUSE OF APPLICATION ISSUES

- Database access
- Memory leaks & GC
- Code-level performance
- Remoting/SOA overhead
- Thread & synchronization
- Exception/log discovery

KEY FEATURES

- Extend load testing tools to directly relate requests of virtual users to code-level issues
- Integrate with manual testing to automate issue documentation and eliminate problem reproduction
- Trace and capture all app transactions at 3-5% overhead
- Trace transactions across distributed & heterogeneous Java/.NET applications within a single integrated view
- Record transactions for full interactive offline analysis
- Point and click auto-sensor assistant and visual class browser to maximize visibility into your code
- Centrally manage instrumentation profiles and performance results of multiple applications

KEY BENEFITS

- Reduce Mean-Time-To-Repair by 90%**
 - Automate issue documentation and eliminate the need to reproduce them, simplifying collaboration with developers
 - Automate problem isolation and avoid blame-storming
 - 3-clicks to root-cause expedites problem diagnostics
 - Accelerate final problem resolution
- Reduce & accelerate required test cycles**
 - Eliminate test runs with additional logs to drill into certain problem areas
 - Eliminate manual log file collection and issue description
- Uncover hidden performance issues inside applications**
 - Find component-level issues invisible to load testing tools

CONTINUOUS APM SUITE

The dynaTrace suite includes the following editions:

- Development
- Test Center
- Production